

Online ADHD service map

The CATCH-uS team have released a map of existing adult ADHD services in the UK. The map was created from survey responses of more than 2,500 young people, parents, health workers and UK commissioners who provided information on services for adults with ADHD in their area, early in 2018.

The map is part of the wider CATCH-uS Project (<http://medicine.exeter.ac.uk/catchus/>), which focuses on what happens to young people with ADHD when they are too old to stay within children's services. It aims to establish how many young people with ADHD are in need of services for ADHD as adults, and investigate young peoples, parents and practitioner's views about the transition process. Some members of our Family Faculty were part of the working group for the CATCH-uS project.

To view the map click here: <http://bit.ly/adultADHDmap>

New PenCRU and Family Faculty logo coming soon!

Following the news that Cerebra terminated their funding for our unit, we held a 'PenCRU and Family Faculty consultation meeting'. It was fantastic to hear how positive our Family Faculty members experience of being involved in PenCRU continues to be. We decided at the meeting to create a new logo that better reflects the partnership between PenCRU and Family Faculty. This is currently with The University's design team and we will share it with you in the New Year!

Contact the team

Email: pencru@exeter.ac.uk
Phone: 01392 722968
Website: www.pencru.org

Address: PenCRU, University of Exeter Medical School, South Cloisters, St Luke's Campus, Exeter, EX1 2LU

Find us on Facebook:

www.facebook.com/Pencru



Twitter: twitter.com/Pen_CRU



PenCRU and Family Faculty



PenCRU Newsletter December 2018, Issue 29



COLLEGE OF MEDICINE AND HEALTH

Inside this issue:

- > What's the Evidence? summaries
- > PenCRU staff updates
- > Recent publications
- > Mapping ADHD services

Healthy Parent Carers

Our NHS funded Healthy Parent Carers project recently featured on BBC Spotlight and the story was also covered by DevonLive. Many thanks to Faye and her family who feature in the item. To see the full BBC Spotlight clip please go to our Facebook page www.facebook.com/Pencru/.

We are also delighted to announce that the delivery of the programme will also be supported by the Big Lottery fund. To find out more about the programme please visit our website. <http://sites.exeter.ac.uk/healthyparentcarers/>

Would you or a friend like to take part?

We are still recruiting for the Healthy Parent Carers programme and would love you to get in contact if you would like to take part. The Torbay site has now closed but we are still looking for participants for the following sites:

- Plymouth:** Spring term 2019 (Register your interest for Plymouth before 10th January)
- Minehead:** Summer term 2019
- Bideford:** Summer term 2019
- Dawlish:** Summer term 2019
- St Austell:** Summer term 2019

Call us: 01392 722968

Email: healthyparentcarers@exeter.ac.uk

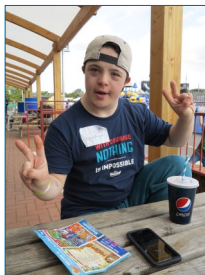


NATIONAL LOTTERY FUNDED



Family Fun Day

We had a fantastic day out at Crealy adventure Park in September for our annual Family Fun Day! The weather was kind to us (as usual) so we enjoyed the rides in the sun. Vinny the mime artist joined us to entertain the children—and grown-ups! A huge thanks to those families that came along and helped make it such a fun day out.



Recent Publications

Two academic papers have been published recently relating to research evaluating peer support. One is a paper on public involvement in health economic related research. We are one of three groups reflecting on our experience of involving the public in child health research. In our case we describe how parent carers were involved in a study we worked on several years ago evaluating the costs and benefits of Face2Face peer support in Devon and Cornwall

<https://link.springer.com/article/10.1007%2Fs41669-018-0099-7>

The other paper is the protocol (how the research will be carried out) for our review of the evidence about evaluating peer support for parents of babies in neonatal units. The full paper can be found below.

<https://systematicreviewsjournal.biomedcentral.com/articles/10.1186/s13643-018-0850-2>

The plain language summary of this protocol can be found here:

https://www.crd.york.ac.uk/PROSPEROFILES/90569_PROTOCOL_20180326.pdf



What's the Evidence? summaries

New evidence summaries

Colourful Semantics for children with Autism Spectrum Disorder

<http://www.pencru.org/evidence/colourfulsemantics/>

Cannabis-based products to treat childhood epilepsy

<http://www.pencru.org/evidence/cannabisandepilepsy/>



Updated evidence summaries

Is G Therapy an effective treatment for Cerebral Palsy?

<http://www.pencru.org/evidence/gtherapy/>

Cell Therapy for Cerebral Palsy

<http://www.pencru.org/evidence/stemcelltrialsdp/>

Can Omega 3 supplements reduce symptoms in children with ADHD?



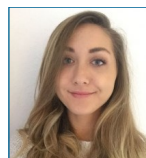
PenCRU staff updates

Farewell!

Kath Wilkinson—Kath has recently started maternity leave and will be returning to PenCRU in 2020.

Hannah Morris—Hannah left PenCRU in October to look after her little boy full-time.

Astrid Janssens—Astrid has moved to take up a position as Associate Professor in Odense, Denmark.



Welcome!

Beth Cuffe-Fuller—Beth joined PenCRU in November. Beth is a researcher and will be working on the Healthy Parent Carers project.



Helen Eke—Helen will be joining the team in January. Helen is a researcher and will be working on the ICoN (Improving continence in children with disability) project.

